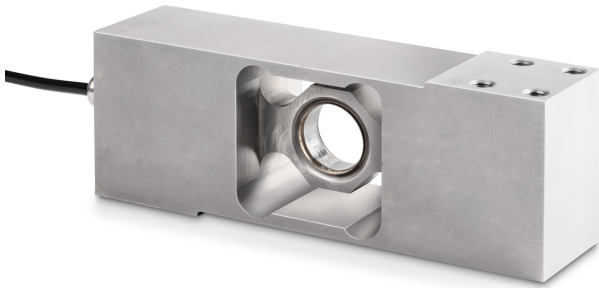


# KERN CP 400-3P9

# KERN

Single-point load cell made from stainless steel



## Category

Brand	Sauter
Product category	Measuring cell
Product group	Load cell
Product family	CP P9

## Measuring System

Weighing capacity [Max]	400 kg
Load cell connection	4-wire
Load cell OIML class	C3
Load cell - Resolution (verifiable)	3000 e
Maximum platform size	800×800 mm
Load cell - characteristic value - nominal	2 mV/V
Load cell - characteristic value - variance	0,2 mV/V
Load cell - Y-value	10000
Load cell - Combined error	0,023%
Load cell - Dead load [Min] (%)	0%
Measuring applications	mass
Load cell - Input resistance - nominal	350 Ω
Load cell - Output resistance - nominal	350 Ω
Load cell - Isolation resistance - [Min]	5000 MΩ
Load cell - Recommended excitation voltage [Min]	5 V
Load cell - Recommended excitation voltage [Max]	12 V
Load cell - Input resistance - variance	3,5 Ω
Load cell - Output resistance - variance	10 Ω
Directions of force	compression

## Approval

CE mark	✓
---------	---

## Construction

Design	Singlepoint load cell
Dimension (W×D×H)	174×45×64 mm
Material	stainless steel
Cable length	3 m
Mounting - force application	4 × threaded hole M8
Mounting - force dissipation	4 × threaded hole M8

## Functions

IP protection - complete device	IP68 IP69K
---------------------------------	---------------

## Environmental conditions

Use temperature [Min]	-10 °C
Use temperature [Max]	40 °C
Ambient temperature [Min]	-35 °C
Ambient temperature [Max]	65 °C
Storage temperature [Min]	-40 °C
Storage temperature [Max]	70 °C

## Packing & Shipping

Readability force [d] (N)	1 d
Dimensions packaging (W×D×H)	280×175×125 mm
Net weight	2,815 kg
Shipping method	Parcel service
Net weight approx.	3,0 kg
Gross weight approx.	3,4 kg
Shipping weight	3,346 kg

## Services (optional)

Article number for DAkkS calibration (compressive force)	963-263V
--	----------

## Pictograms

### STANDARD



### OPTION

